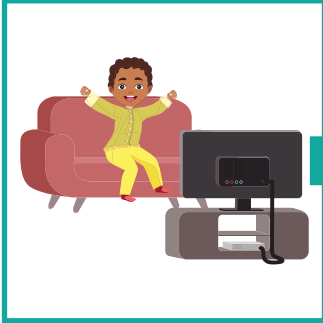


Telling Time | A.M. and P.M.

Answer Key

Check whether these actions happen in a.m. or p.m.

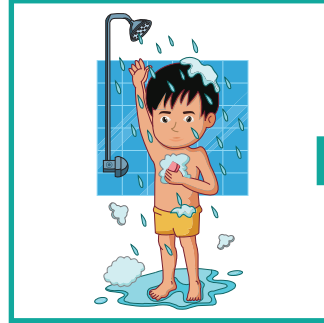
1)



A.M. / P.M.

watching the late-night talk show

2)



A.M. / P.M.

bathing before school

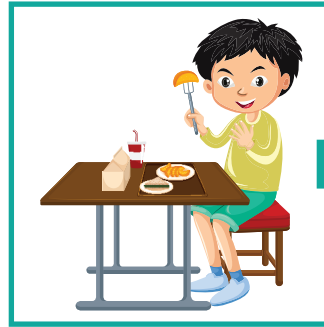
3)



A.M. / P.M.

sunrise

4)



A.M. / P.M.

having lunch

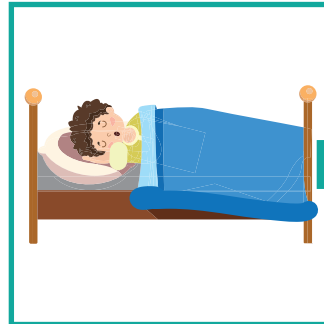
5)



A.M. / P.M.

early morning jog

6)



A.M. / P.M.

going to bed