

# Converting from 12-Hour Clocks to 24-Hour Clocks Answer Key

A) Convert each time from the 12-hour clock to the 24-hour clock.

1) 6:00 a.m. = 06:00

2) 11:56 p.m. = 23:56

3) 9:24 a.m. = 09:24

4) 8:45 p.m. = 20:45

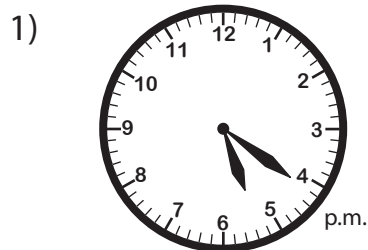
5) 10:05 p.m. = 22:05

6) 10:33 a.m. = 10:33

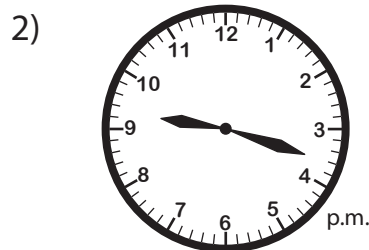
7) 1:53 a.m. = 01:53

8) 2:38 p.m. = 14:38

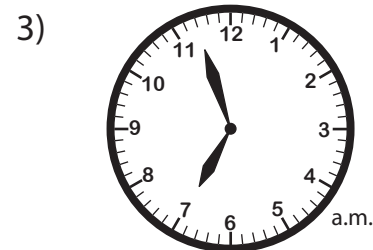
B) Read each analog clock, and write the time in the 24-hour format.



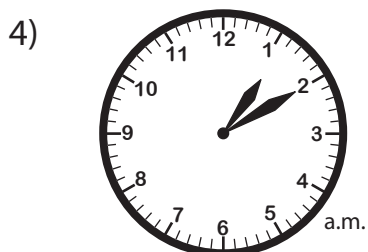
17:21



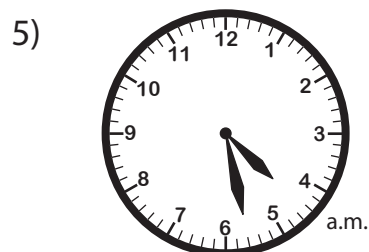
21:18



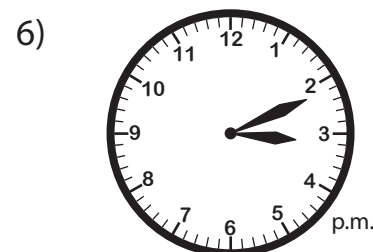
06:57



01:10



04:28



15:11