

# Converting from 12-Hour Clocks to 24-Hour Clocks

Answer Key

A) Convert each time from the 12-hour clock to the 24-hour clock.

1) 4:36 p.m. = 16:36

2) 5:20 a.m. = 05:20

3) 7:12 a.m. = 07:12

4) 2:54 p.m. = 14:54

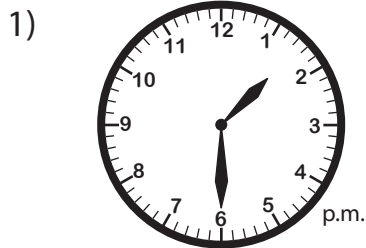
5) 10:31 a.m. = 10:31

6) 1:40 p.m. = 13:40

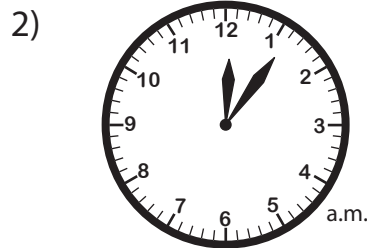
7) 6:39 p.m. = 18:39

8) 12:48 a.m. = 00:48

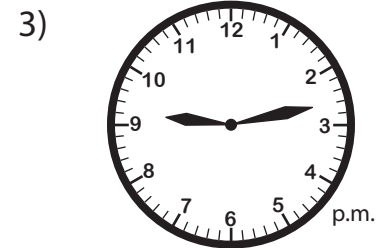
B) Read each analog clock, and write the time in the 24-hour format.



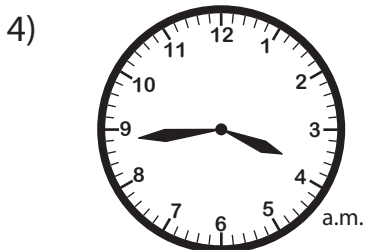
13:30



00:06



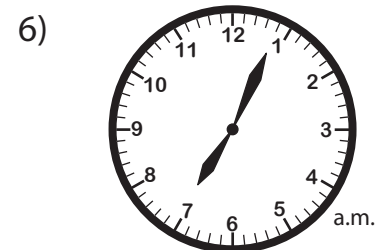
21:13



03:44



14:58



07:04