

Converting from 12-Hour Clocks to 24-Hour Clocks Answer Key

A) Convert each time from the 12-hour clock to the 24-hour clock.

1) 11:07 a.m. = 11:07

2) 7:09 p.m. = 19:09

3) 2:43 p.m. = 14:43

4) 3:00 a.m. = 03:00

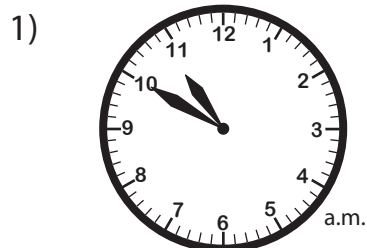
5) 7:14 a.m. = 07:14

6) 5:25 a.m. = 05:25

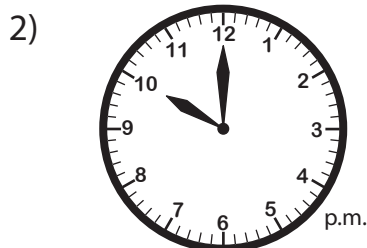
7) 12:29 p.m. = 12:29

8) 3:17 p.m. = 15:17

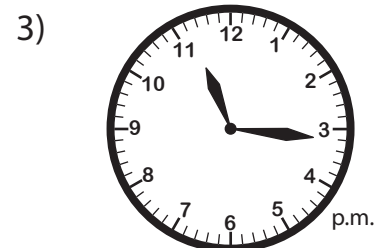
B) Read each analog clock, and write the time in the 24-hour format.



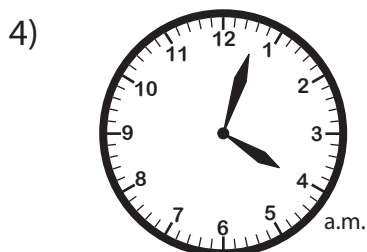
10:50



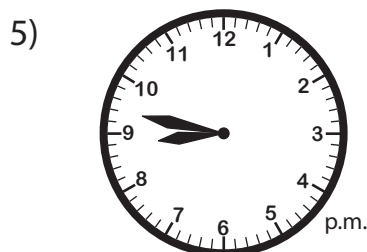
22:00



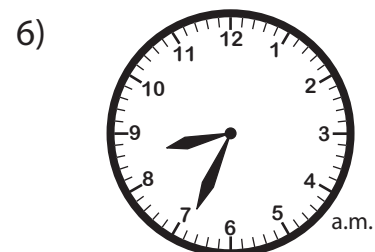
23:16



04:03



20:47



08:34