


Near and Far

- A) Look at each image and choose "near" or "far from" as appropriate.

1)  → The bird is **near** / **far from** the birdhouse.

2)

Preview

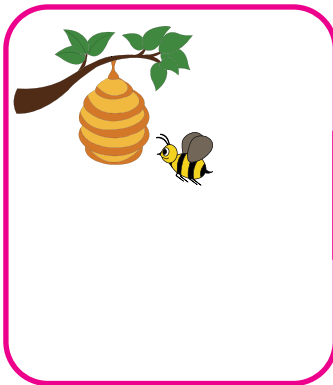
3)

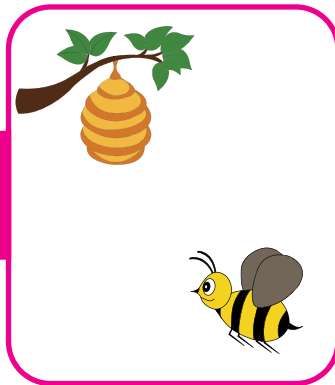
Become a member to unlock
unrestricted access to both printable
and online worksheets.

B)

www.tutoringhour.com

- 1) The bee is near the honey comb.





- 2) Santa Claus is far from the gift.



