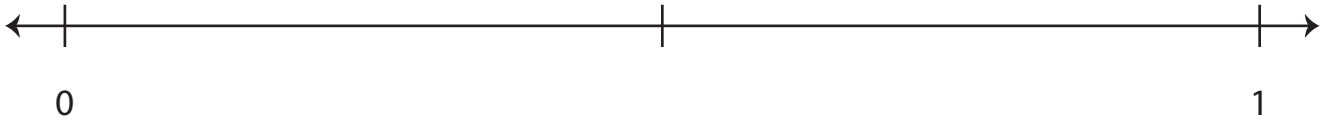


# Fractions on a Number Line

A) Plot the given fraction on each number line.

1)  $\frac{1}{2}$



2)  $\frac{8}{10}$

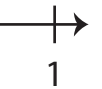
# Preview

Become a member to unlock  
unrestricted access to both printable  
and online worksheets.

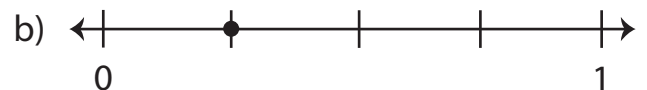
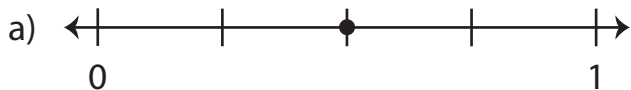
www.tutoringhour.com



B) 1



2) Which number line represents the fraction  $\frac{2}{4}$  ?



3) Which number line represents the fraction  $\frac{9}{12}$  ?

